

P237

Rev. C

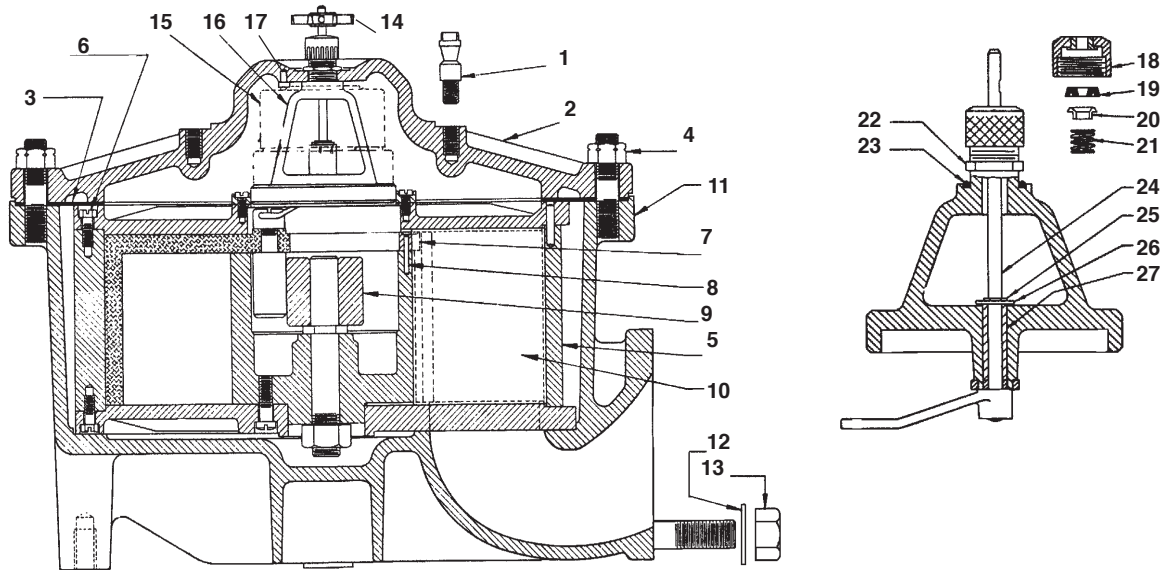
Petroleum Flowmeters:

3" Type 4 (with air release & strainer)

3" Type 4 & 40 (without air release & strainer)

RED SEAL MEASUREMENT

Parts List for **neptune** Petroleum Meters



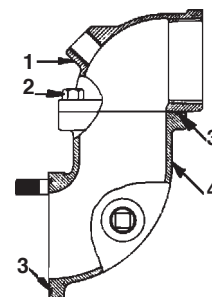
Index	Part	Part No.
1	Stud, Register Clamp	084435-000
2	Cover, Main Casing	080618-001
3	Gasket, Main Casing	043958-004
4	Nut, 1/2 - 13 hex, buna (16)	086155-000
	Seal Nut, Drilled (2)	008345-422
5	Measuring Chamber Complete (Type 4)	C80145-001
	Type 40	C80145-002
6	Screw Chamber	088638-000
7	Seal Pin	042949-000
8	Dowel Stud, Seal Pin	008349-002
9	Control Roller	042373-002
10	Diaphragm	042369-001
11	Main Casing	082676-000
12	Washer, Flange Stud	000616-000
13	Nut, 5/8-11 hex	041226-000
14	Star Connection Complete	082976-001

Index	Part	Part No.
15	*Gear Train Complete, 3.125 reduction (liters) 11.96 reduction (10 US gallons)	082679-053 082679-051
16	Stuffing Box Spindle Housing (1:1 USG)	1002350
17	Locking Pin	046761-001
18	Stuffing Box Nut & Bushing	083536-000
19	Seal, U-cup Shaft	100025-002
20	Expander Seal	083539-000
21	Spring, Stuffing Box	083540-000
22	Nut, Clamp	000034-000
23	Gasket, Gear Train, O-ring	100138-003
24	Spindle & Arm Assembled	085623-002
25	Ring, Spindle Retaining	088462-000
26	Spacer, Spindle	088286-003
27	Bushing, Housing	082906-000

For gear trains not listed give reductions as stamped on lower plate.

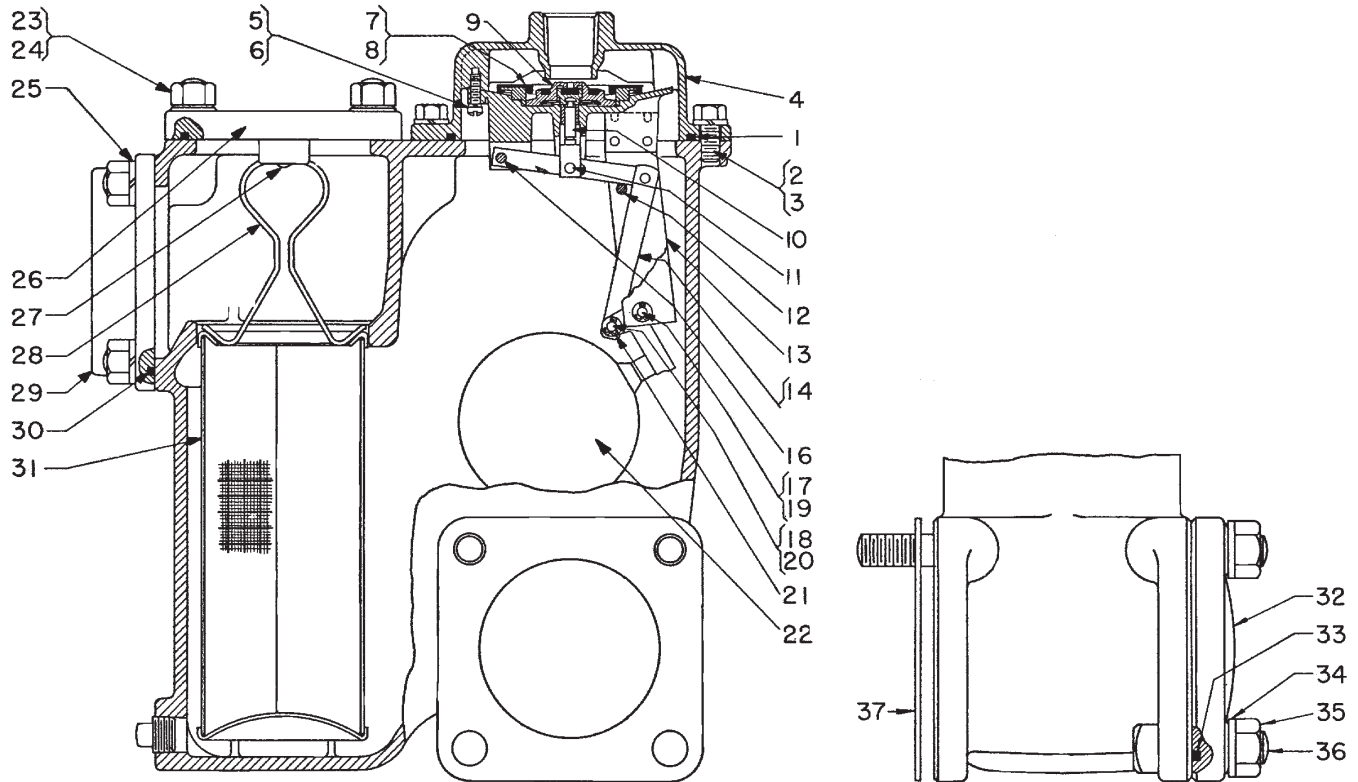
OUTLET ADAPTER

Index	Part	Part No.
1	Elbow, Adapter, with 3 pipe plugs	082802-001
2	Bolt, 7/16-14 x 1-1/4 hex hd	100071-023
3	Gasket, O-ring	100139-021
4	Body Assembled, Adapter	082812-000



TYPE 4 AIR RELEASE AND STRAINER

PART NO. 83901-00X



Index	Part	Part No.
1	Gasket, O-ring	100139-022
2	Bolt, 3/8-16 x 7/8 hex hd	008325-014
3	Lockwasher, 3/8	100440-001
-	Mounting Cover w/Float Valve	83910-001
4	Cover, Mounting	082451-004
5	Screw, 10-32 x 5/8 fil hd	041221-002
6	Lockwasher No. 10	041221-000
7	Piston Seal	083179-000
8	Sleeve, Main Valve	082446-005
9	Main Valve Complete	089274-010
-	Valve Hsg & Float Assy	086773-001
10	Stem, Valve	083127-001
11	Pin, Valve Stem	042941-000
12	Pin, Float Stop	040820-004
13	Lower, Valve Hsg & Extensions	083457-101
14	Link Assembly	080002-002
16	Pin, Valve Lever	040819-002
17	Pin, Float Lever (long)	040820-003
18	Pin, Float Lever (short)	082633-000
19	Washer, long pin	040491-000
20	Washer, short pin	041989-000
21	Cotter Pin, 1/16 dia x 1/2	041402-000

Index	Part	Part No.
22	Float Assembly	082476-001
23	Nut, 7/16-14 hex	041118-000
24	Washer, Strainer Cover, plain	041012-002
25	Lockwasher, 7/16	041012-002
26	Cover Assembled, Strainer	083905-000
27	Drive Screw, No. 6 Type U. (P.K.)	008328-115
28	Strap, Retaining	083907-001
29	Flange, Inlet	082693-001
30	Gasket, O-ring	100139-018
31	Strainer, 16 mesh	083909-003
	40 mesh	083909-002
	60 mesh	083909-001
	80 mesh	083909-000
32	Cover, Outlet	083904-000
33	Gasket, O-ring	100139-020
34	Washer, Outlet Cover, plain	000616-000
35	Nut, 5/8-11 hex	041226-000
36	Bolt, 5/8-11x2 sq hd	050223-001
37	Gasket, Outlet, flat	043959-002
-	Hose with Coupling	084106-000
-	Nipple, 3/4 x 1-3/8 black iron	041866-000
-	Elbow, 3/4 x 90 black iron	041100-000

Specify Genuine Neptune Replacement Parts

U.S.A./International
 1310 Emerald Road
 Greenwood, SC 29646-9558
 Tel.: Toll-Free (800) 833-3357
 (864) 223-1212
 Fax: (864) 223-0341

© 2013 Red Seal Measurement 500 01/13

Specifications subject to change without prior notification.

**RED SEAL
MEASUREMENT**